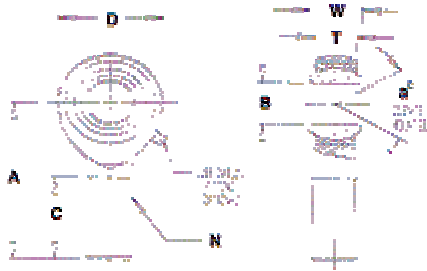


M / F

3-PIECE, PRECISION - BRASS



MATERIALS

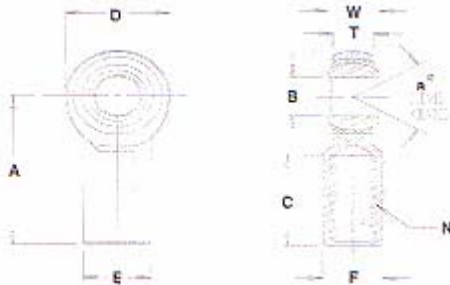
BALL	BODY
52100 STEEL Rc 56 MIN. HARD HARD CHROME PLATED	LOW CARBON STEEL ZINC PLATED CHROMATE TREATED
RACE	
BRASS	

MALE ROD ENDS		B DIA.	D DIA.	W WIDTH	T WIDTH	BALL DIA.	A LGTH	N THD.	C LGTH	^a MIS. ANGLE	ULT. STATIC RADIAL LOAD (lbs)	APPROX. WEIGHT (lbs)
RIGHT HAND PART NO.	LEFT HAND PART NO.	+ .0015 - .0005	+ .010 - .010	+ .005 - .005	+ .015 - .015	REF.	+ .015 - .015	UNF 3A	+ .062 - .031	REF.		
M3	ML3	.1900	.625	.312	.250	.437	1.250	10-32	.750	13	1,174	.03
M4	ML4	.2500	.750	.375	.281	.500	1.562	1/4-28	1.000	16	2,168	.04
M5	ML5	.3125	.875	.437	.344	.625	1.875	5/16-24	1.250	14	2,796	.07
M6	ML6	.3750	1.000	.500	.406	.719	1.938	3/8-24	1.250	12	4,012	.11
M7	ML7	.4375	1.125	.562	.437	.812	2.125	7/16-20	1.375	14	4,244	.16
M8	ML8	.5000	1.312	.625	.500	.937	2.438	1/2-20	1.500	12	6,700	.25
M10	ML10	.6250	1.500	.750	.562	1.125	2.625	5/8-18	1.625	16	7,400	.38
M12	ML12	.7500	1.750	.875	.687	1.312	2.875	3/4-16	1.750	14	11,550	.60

MALE ROD END LOAD RATINGS BASED ON A NO LUBRICATING FITTING FOR LOAD RATINGS WITH LUBRICATOR, PLEASE CONTACT THE FK ENGINEERING DEPARTMENT.

MATERIALS

BALL	BODY
52100 STEEL Rc 56 MIN. HARD HARD CHROME PLATED	LOW CARBON STEEL ZINC PLATED CHROMATE TREATED
RACE	
BRASS	



FEMALE ROD ENDS		B DIA.	D DIA.	W WIDTH	T WIDTH	BALL DIA.	A LGTH	N THD.	C LGTH	E DIA.	F FLAT	^a MIS. ANGLE	ULT. STATIC RADIAL LOAD (lbs)	APPROX. WEIGHT (lbs)
RIGHT HAND PART NO.	LEFT HAND PART NO.	+ .0015 - .0005	+ .010 - .010	+ .005 - .005	+ .015 - .015	REF.	+ .015 - .015	UNF 2B	+ .062 - .031	+ .010 - .010	+ .010 - .010	REF.		
F3	FL3	.1900	.625	.312	.250	.437	1.062	10-32	.500	.406	.312	13	1,624	.04
F4	FL4	.2500	.750	.375	.281	.500	1.312	1/4-28	.687	.469	.375	16	2,545	.06
F5	FL5	.3125	.875	.437	.344	.625	1.375	5/16-24	.687	.500	.437	14	3,200	.09
F6	FL6	.3750	1.000	.500	.406	.719	1.625	3/8-24	.812	.687	.562	12	3,950	.15
F7	FL7	.4375	1.125	.562	.437	.812	1.812	7/16-20	.937	.750	.625	14	4,300	.20
F8	FL8	.5000	1.312	.625	.500	.937	2.125	1/2-20	1.062	.875	.750	12	6,700	.33
F10	FL10	.6250	1.500	.750	.562	1.125	2.500	5/8-18	1.375	1.000	.875	16	7,400	.48
F12	FL12	.7500	1.750	.875	.687	1.312	2.875	3/4-16	1.562	1.125	1.000	14	11,550	.72

NOTES: FOR GREASE FITTINGS ADD "Z" TO SUFFIX **EXAMPLE:** M8Z
FOR STUDS ADD "Y" TO SUFFIX **EXAMPLE:** F6Y