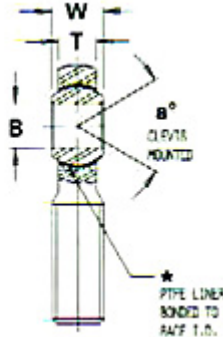
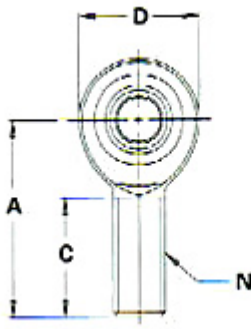


RSM / RSM-T

3-PIECE, EXTRA STRENGTH - HEAVY DUTY SHANK / PTFE LINERS AVAILABLE



MATERIALS

BALL

52100 Steel
Rc 56 MIN.
HARD CHROME
PLATED

BODY

LOW CARBON STEEL
ZINC PLATED
CHROMATE TREATED

RACE

STEEL ALLOY
HEAT TREATED
ZINC PLATED
CHROMATE
TREATED

MALE ROD ENDS		B DIA.	D DIA.	W WIDTH	T WIDTH	BALL DIA.	A LGTH	N THD.	C LGTH	a MIS. ANGLE	ULT. STATIC RADIAL LOAD (lbs)	APPROX. WEIGHT (lbs)
RIGHT HAND PART NO.	LEFT HAND PART NO.	+0.0015 -0.0005	+0.010 -0.010	+0.000 -0.005	+0.005 -0.005	REF.	+0.015 -0.015	UNF 3A	+0.062 -0.031	REF.		
RSM3	RSML3	.1900	.750	.312	.250	.437	1.562	1/4-28	1.000	10	2,170	.043
RSM4	RSML4	.2500	.875	.375	.281	.500	1.875	5/16-24	1.250	13	3,523	.072
RSM5	RSML5	.3125	1.000	.437	.344	.625	1.938	3/8-24	1.250	12	5,370	.112
RSM6	RSML6	.3750	1.125	.500	.406	.719	2.125	7/16-20	1.375	10	7,230	.160
RSM7	RSML7	.4375	1.312	.562	.437	.812	2.438	1/2-20	1.500	12	9,685	.249
RSM8	RSML8	.5000	1.500	.625	.500	.937	2.625	5/8-18	1.625	10	12,843	.382
RSM10	RSML10	.6250	1.750	.750	.562	1.125	2.875	3/4-16	1.750	13	16,613	.602

MATERIALS

BALL

52100 Steel
Rc 56 MIN.
HARD CHROME PLATED

BODY

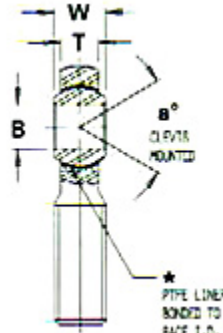
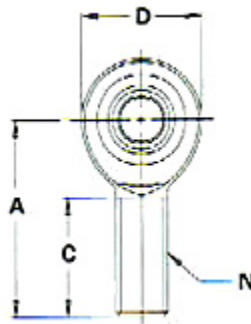
LOW CARBON STEEL
ZINC PLATED
CHROMATE TREATED

RACE

STEEL ALLOY
HEAT TREATED
ZINC PLATED
CHROMATE TREATED

LINER

*TEFLON FABRIC



MALE ROD ENDS		B DIA.	D DIA.	W WIDTH	T WIDTH	BALL DIA.	A LGTH	N THD.	C LGTH	a MIS. ANGLE	ULT. STATIC RADIAL LOAD (lbs)	APPROX. WEIGHT (lbs)
RIGHT HAND PART NO.	LEFT HAND PART NO.	+0.0015 -0.0005	+0.010 -0.010	+0.005 -0.005	+0.005 -0.005	REF.	+0.015 -0.015	UNF 3A	+0.062 -0.031	REF.		
RSM3T	RSML3T	.1900	.750	.312	.250	.437	1.562	1/4-28	1.000	10	2,170	.043
RSM4T	RSML4T	.2500	.875	.375	.281	.500	1.875	5/16-24	1.250	13	3,523	.072
RSM5T	RSML5T	.3125	1.000	.437	.344	.625	1.938	3/8-24	1.250	12	5,370	.112
RSM6T	RSML6T	.3750	1.125	.500	.406	.719	2.125	7/16-20	1.375	10	7,230	.160
RSM7T	RSML7T	.4375	1.312	.562	.437	.812	2.438	1/2-20	1.500	12	9,685	.249
RSM8T	RSML8T	.5000	1.500	.625	.500	.937	2.625	5/8-18	1.625	10	12,843	.382
RSM10T	RSML10T	.6250	1.750	.750	.562	1.125	2.875	3/4-16	1.750	13	16,613	.602

MALE ROD ENDS LOAD RATINGS BASED ON NO LUBRICATION FITTING.

*A trade mark of E.I. Dupont de Nemours & Co., Inc.

NOTE: FOR GREASE FITTINGS ADD "Z" TO SUFFIX **EXAMPLE:** RSML5Z

